

Gas network service and access information

Service and access information for the ACT, Queanbeyan and Palerang gas network published in accordance with Division 2 of Part 11 of the National Gas Rules.

Version 1.1 | July 2019

Table of contents

_Toc14184796

Purpose	3
1. Pipeline Information (Rule 112D(2))	4
2. Pipeline Service Information (Rule 112D(3))	6
3. Service Usage Information (Rule 112D(4))	7
4. Service Availability Information (Rule 112D(5))	8

Version control

Date	Version	Description	Author
19 July 2019	1.0	Initial document	Jemena
31 July 2019	1.1	Updated description of large distribution pipelines. Updated map	Jemena

For more information, contact Alex McPherson
Pricing & Compliance Manager
Jemena
Ph: 02 9867 7000
Alex.mcperson@jemena.com.au

Copyright statement

© Evoenergy. All rights reserved. Copyright in the whole or every part of this document belongs to Evoenergy, and cannot be used, transferred, copied or reproduced in whole or in part in any manner or form or in any media to any person other than with the prior written consent of Evoenergy.

Printed or downloaded copies of this document are deemed uncontrolled.

Purpose

The purpose of this document is to provide service and access information required under Division 2 of Part 11 of the National Gas Rules (NGR) for Evoenergy's ACT, Queanbeyan and Palerang gas distribution network (**Network**).

Under NGR Rule 112A the Network is a full regulation distribution pipeline, and the following parts of the Network are large full regulation distribution pipelines

- the Hoskinstown-Fyshwick pipeline
- Canberra Primary system (Watson CTS to Gungahlin PRS, Hume PRS and Phillip PRS)

(**large distribution pipelines**). The location of the large distribution pipelines is shown in the map in section 1.3 below.

The information required to be published under NGR Rule 112D is contained in this document as follows:

Rule	Information	Application	Page
112D(2)	Pipeline information	Network	4
112D(3)	Pipeline service information	Network	6
112D(4)	Service usage information	Large distribution pipelines	7
112D(5)	Service availability information	Large distribution pipelines	8

1. Pipeline Information (Rule 112D(2))

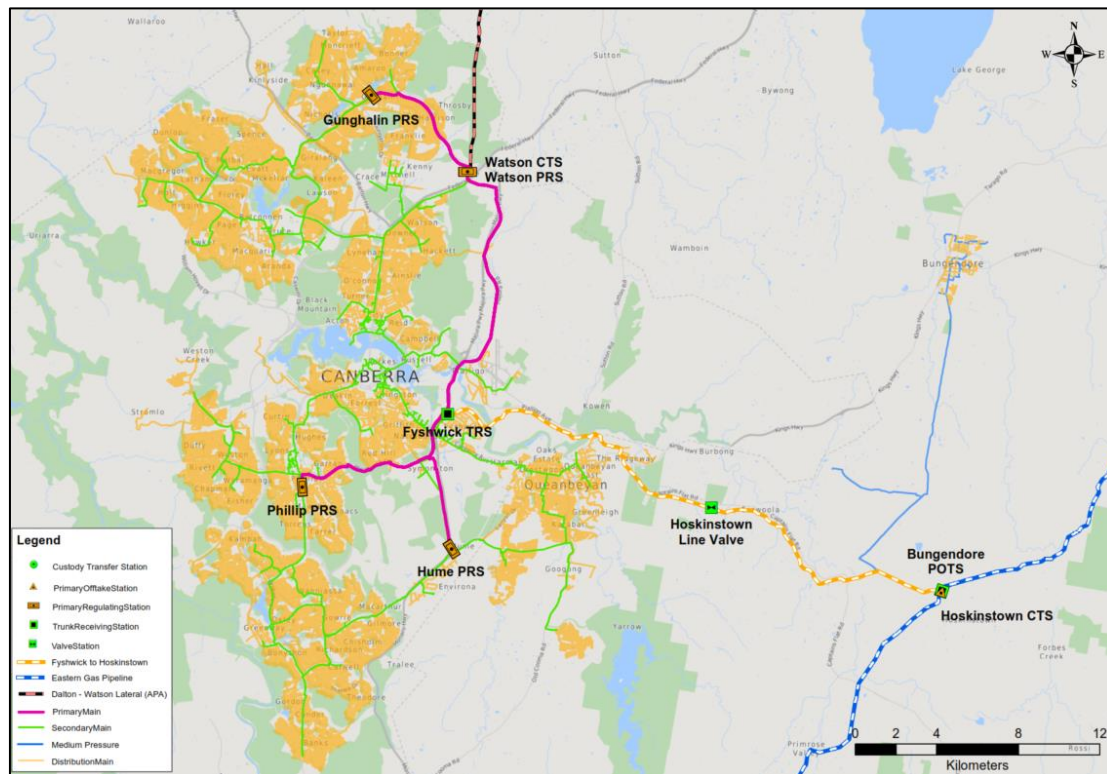
1.1 The quantity of natural gas that can be transported through each gate station on the distribution pipeline in any 24 hour period (Rule 112D(2)(a))

See section 1.2.

1.2 The details of all points on the pipeline where the service provider takes delivery of natural gas (Rule 112D(2)(b))

Receipt point details		Quantity of natural gas capable of transportation (petajoules/24hrs)	Basis of estimate
Gate station	Upstream pipeline		
Watson	Moomba to Sydney Pipeline (Dalton-Canberra lateral)	0.0550	Safety & Operating Plan
Hoskinstown	Eastern Gas Pipeline	0.10010	As built design documents

1.3 A schematic map of the pipeline that shows the location on the pipeline of the points referred to in paragraph (b) and the geographic limits of the areas serviced by the pipeline (Rule 112D(2)(c))



1.4 Any technical or physical characteristics of the pipeline that may affect access to or use of the pipeline or the price for pipeline services on the pipeline (Rule 112D(2)(d))

Details of any such characteristics can be found in the current Access Arrangement for the Network, available on our website at www.evoenergy.com.au/residents/pricing-and-tariffs/gas-access-arrangement.

1.5 Policies of the service provider that may affect access to or use of the pipeline or the price for pipeline services on the pipeline which may include:

- (1) queuing requirements
- (2) a receipt or delivery point change policy
- (3) a metering and measurement policy, and
- (4) a balancing policy

(Rule 112D(2)(e))

Details of any such policies can be found in the current Access Arrangement for the Network, available on our website at www.evoenergy.com.au/residents/pricing-and-tariffs/gas-access-arrangement.

2. Pipeline service information (Rule 112D(3))

- 2.1 A list of the pipeline services available on the pipeline and for each pipeline service a description of the service having regard to the:**
- (1) service type (forward haul, backhaul, connection, park and loan)**
 - (2) priority of the service relative to other pipelines services of the same type, and**
 - (3) receipt and delivery points.**

Details of the pipeline services available on the network are set out in the current Access Arrangement for the Network, available on our website at www.evoenergy.com.au/residents/pricing-and-tariffs/gas-access-arrangement.

3. Service usage information (Rule 112D(4))

- 3.1 The total quantity of natural gas metered as having been injected into the pipeline during the month or, where metering data is not available, estimated to have been injected into the pipeline during the month (Rule 112D(4)(a))

Please see separately published monthly data¹ on our website at www.evoenergy.com.au/about-us/reports-and-publications.

- 3.2 For a large full regulation distribution pipeline, the following information for each entry and exit point on the large distribution pipeline that is owned, operated or controlled by the service provider or for which the service provider holds the information:

- (1) daily flow data
- (2) where a meter is installed at the relevant entry or exit point, hourly flow data
- (3) minimum inlet and minimum outlet pressures over each hour, and
- (4) a static table or chart showing the maximum flow rate of the entry or exit point against pressure.

(Rule 112(D)(4)(b))

Please see separately published monthly reports² on our website at www.evoenergy.com.au/about-us/reports-and-publications for information required under paragraphs 1–3 above.

The information required under paragraph 4 is published³ separately on our website at www.evoenergy.com.au/about-us/reports-and-publications.

¹ Note: the first monthly report will be published on or before 31 July 2019, and then by the last business day of succeeding months.

² Note: the first monthly report will be published on or before 31 July 2019, and then by the last business day of succeeding months.

³ The static chart will be published on or before 31 July 2019.

4. Service availability information (Rule 112D(5))

4.1 An outlook of firm capacity of the pipeline that the service provider has available for sale or that it will have available for sale for each month in the following 36 month period (Rule 112D(5)(a))

The table below sets out the current maximum operating capacity for the large distribution pipelines under normal operating conditions. The firm capacity that is, or would, be available for sale in any month is subject to a number of matters including our obligation to meet delivery commitments to all network users and customers, and the actions by third parties in relation to injection of gas into the network.

These delivery commitments vary on a daily, monthly and annual basis as customers join or leave the network, or change their gas consumption patterns. Actual daily and monthly flow data for the pipelines, and hourly flow data where available, is published on our website⁴, providing information about historical volumes delivered through the pipeline in each month.

Large distribution pipeline	Maximum daily flow under normal operating conditions	Maximum hourly flows under normal operating conditions
Hoskinstown-Fyshwick Pipeline	96TJ/day	105,000scmh or 4,000GJ/hour
Canberra Primary System	70TJ/day	170,000Scmh or 6,460GJ/hour

4.2 Information about matters expected to affect the capacity of the pipeline (including any planned expansions of the capacity) for each month in the following 12 months period, including:

- (1) the expected start and end dates of the matters expected to affect the capacity of the pipeline
- (2) a description of the matters expected to affect the capacity of the pipeline, and
- (3) the expected capacity of the pipeline during the period it is affected by the matters referred to in (1) and (2)

(Rule 112D(5)(b))

If there are any matters expected to affect the capacity of a large distribution pipeline for any month that information will be published on Evoenergy's website at www.evoenergy.com.au/about-us/reports-and-publications.

⁴ See sections 3.1 and 3.2 above

4.3 Information on any other limitations on the availability of the pipeline services identified in the pipeline service information for each month in the following 12 month period (Rule 112D(5)(c)).

If there are any matters expected to limit the availability of pipeline services on a large distribution pipeline for any month that information will be published on Evoenergy's website at www.evoenergy.com.au/about-us/reports-and-publications.